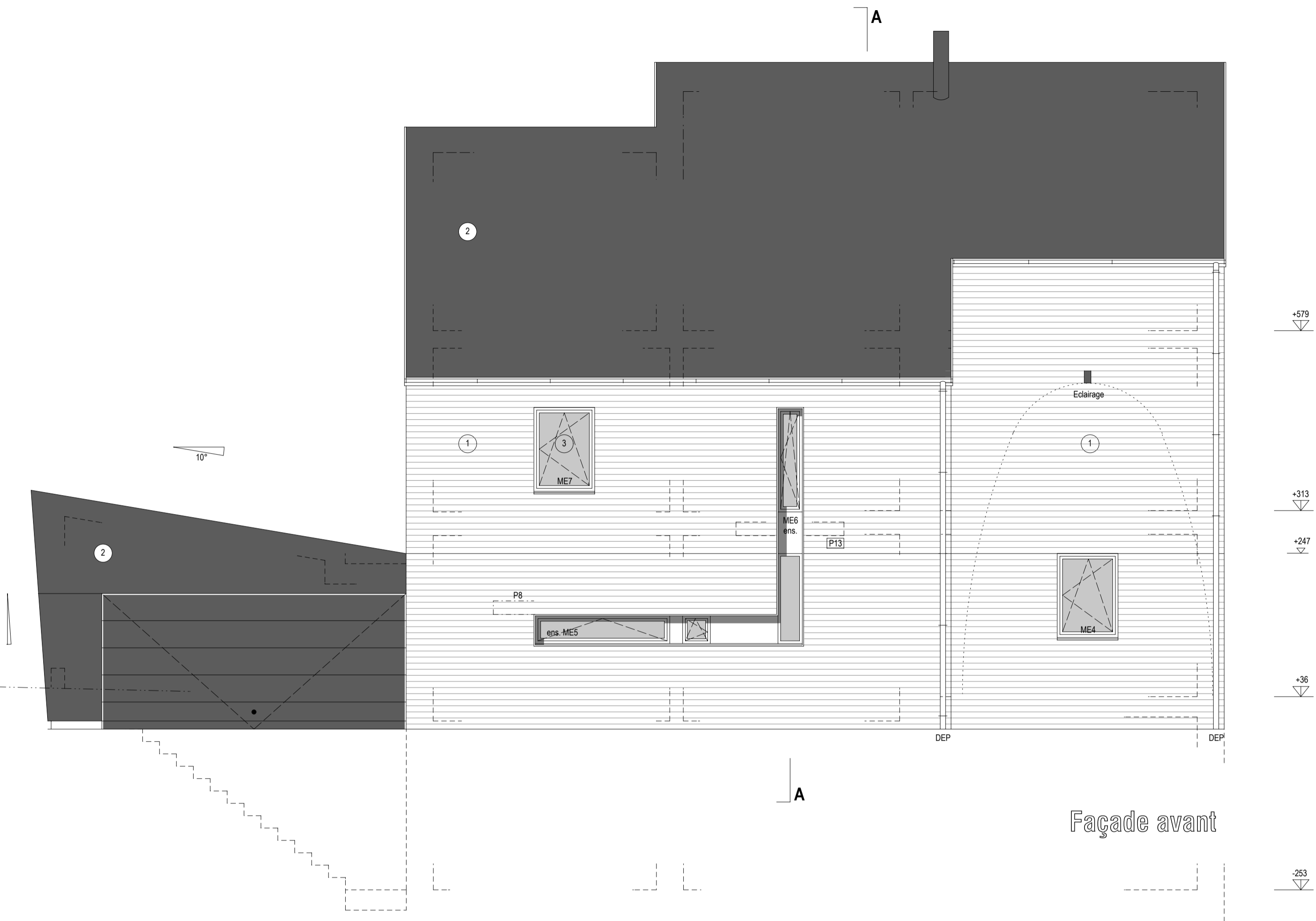
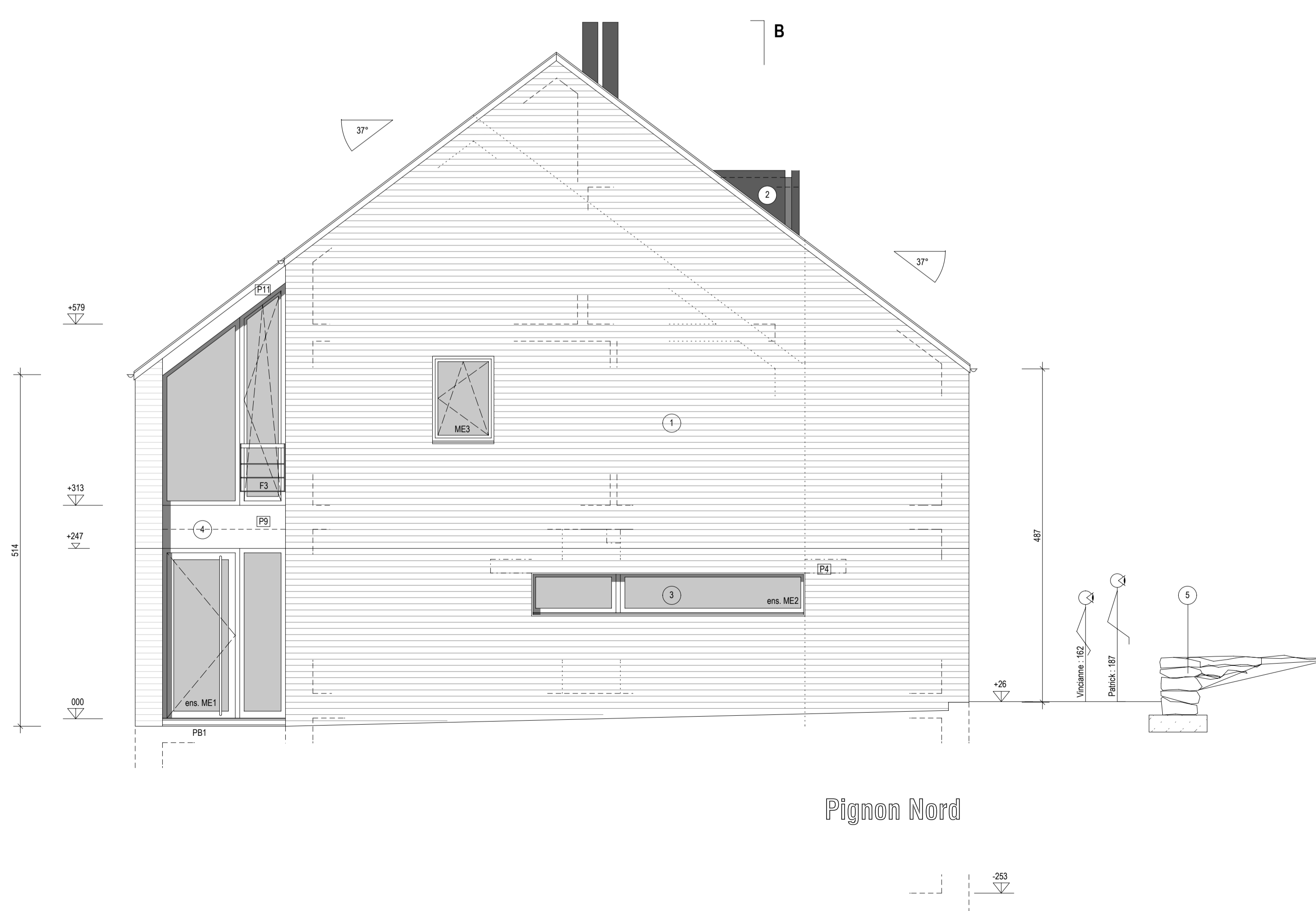


Pignon Sud



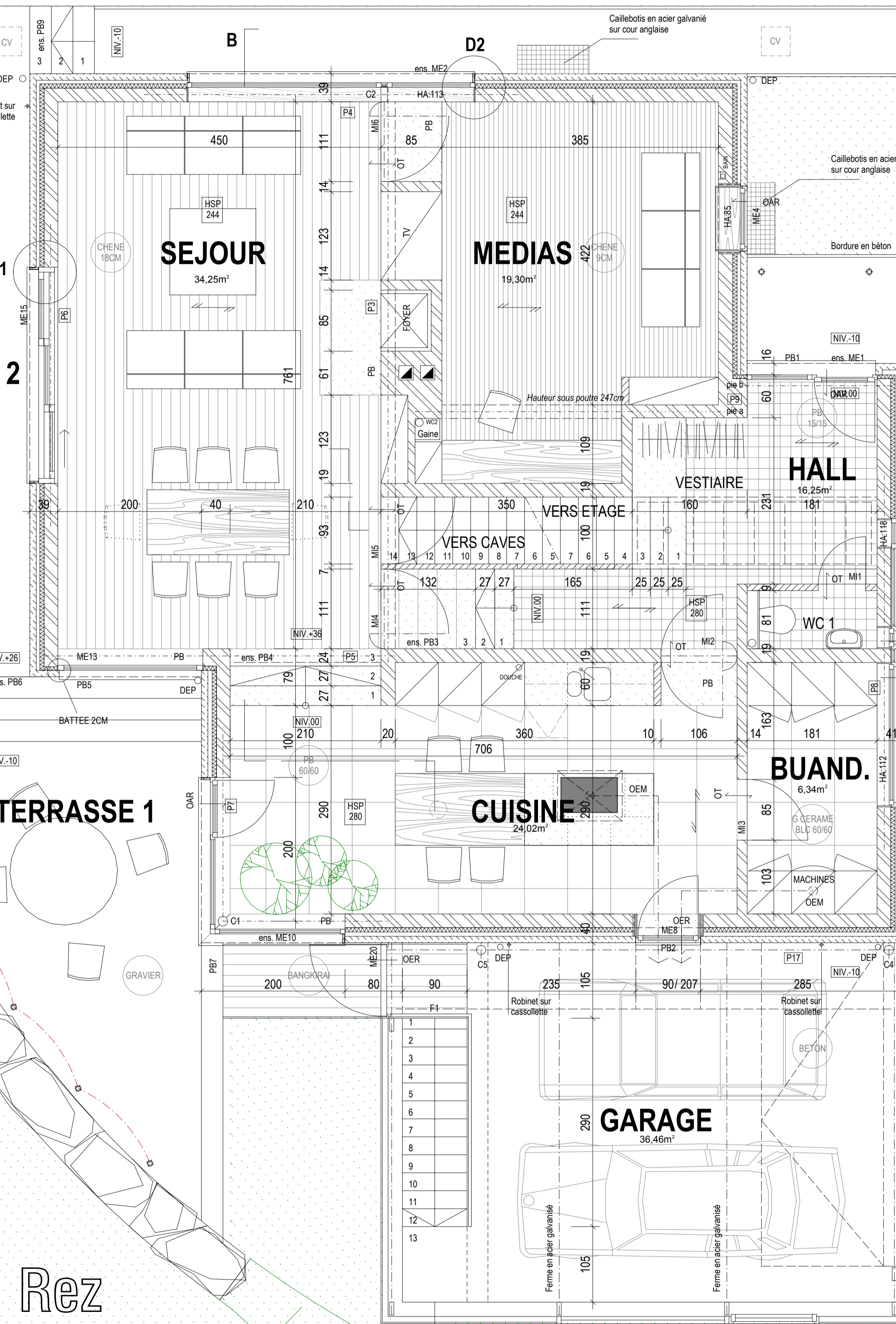
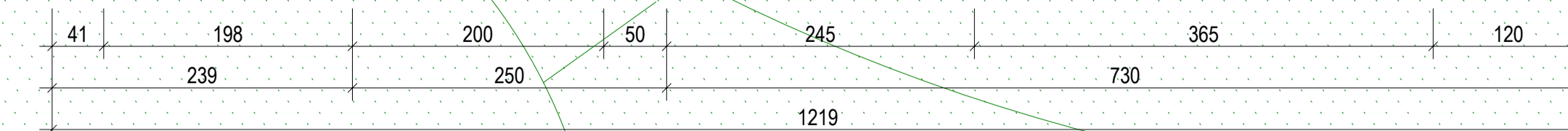
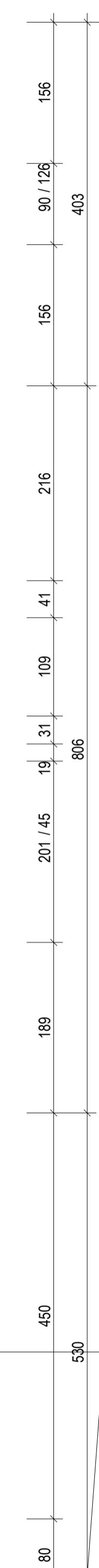
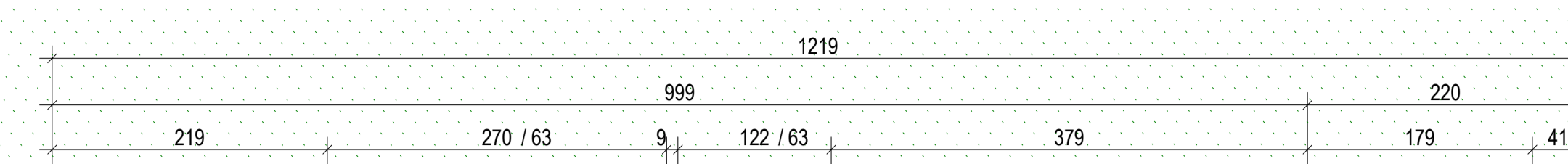
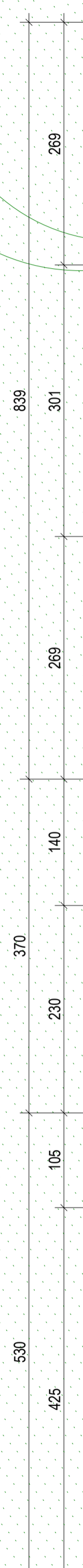
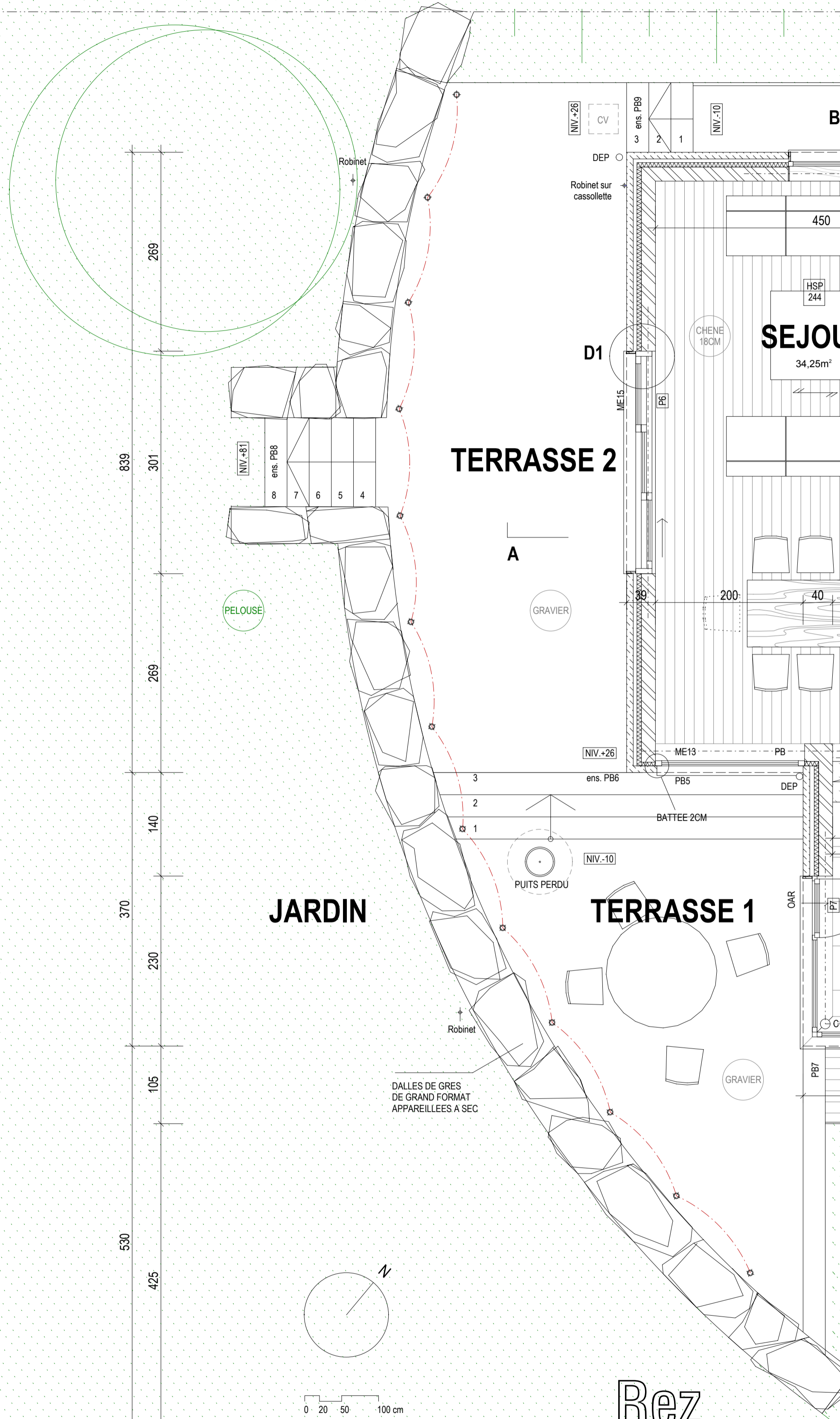
Façade avant



Pignon Nord



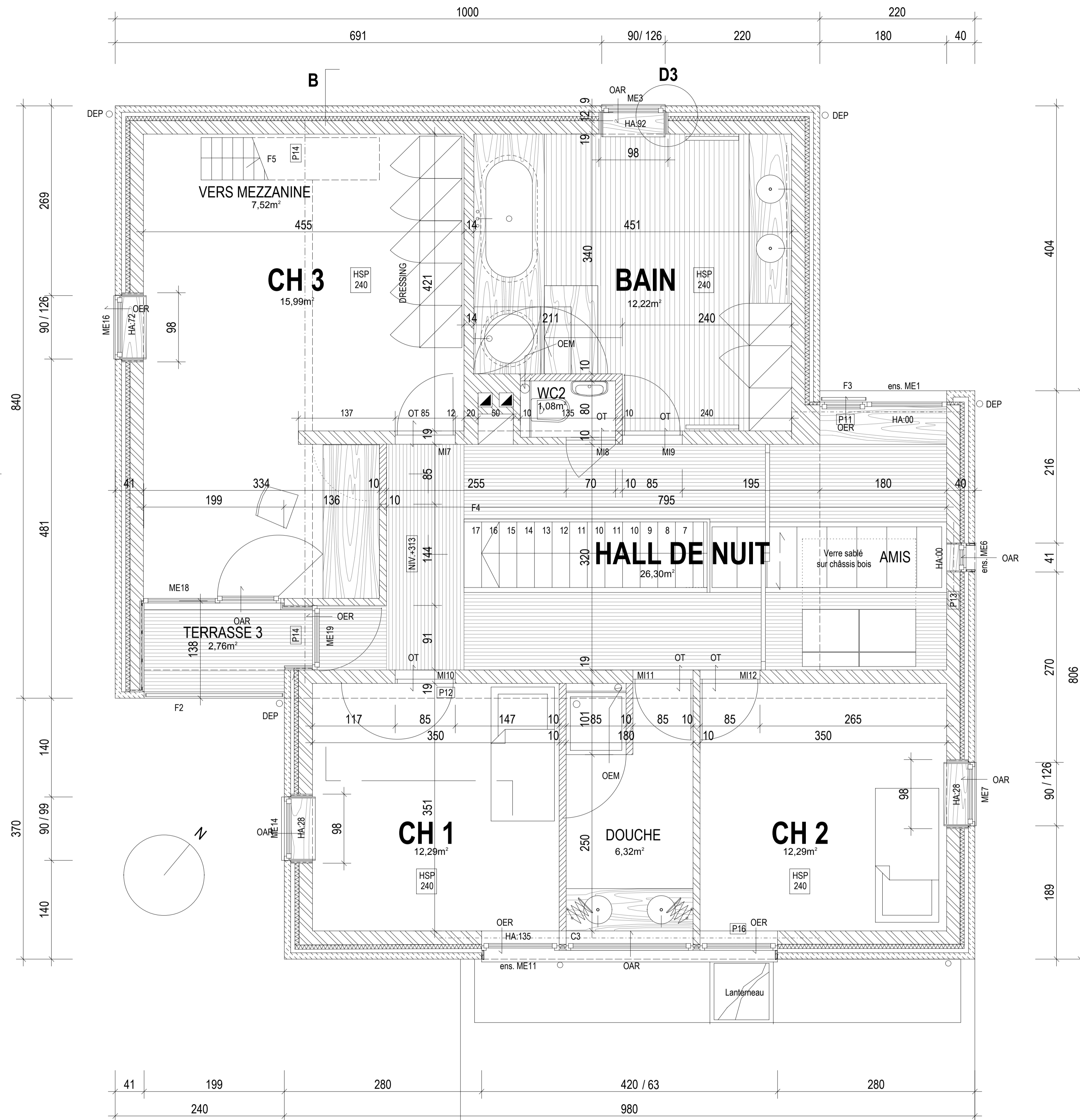
Façade arrière



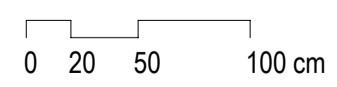
Rez

ALIGNEMENT

PENTE 4%



Etage

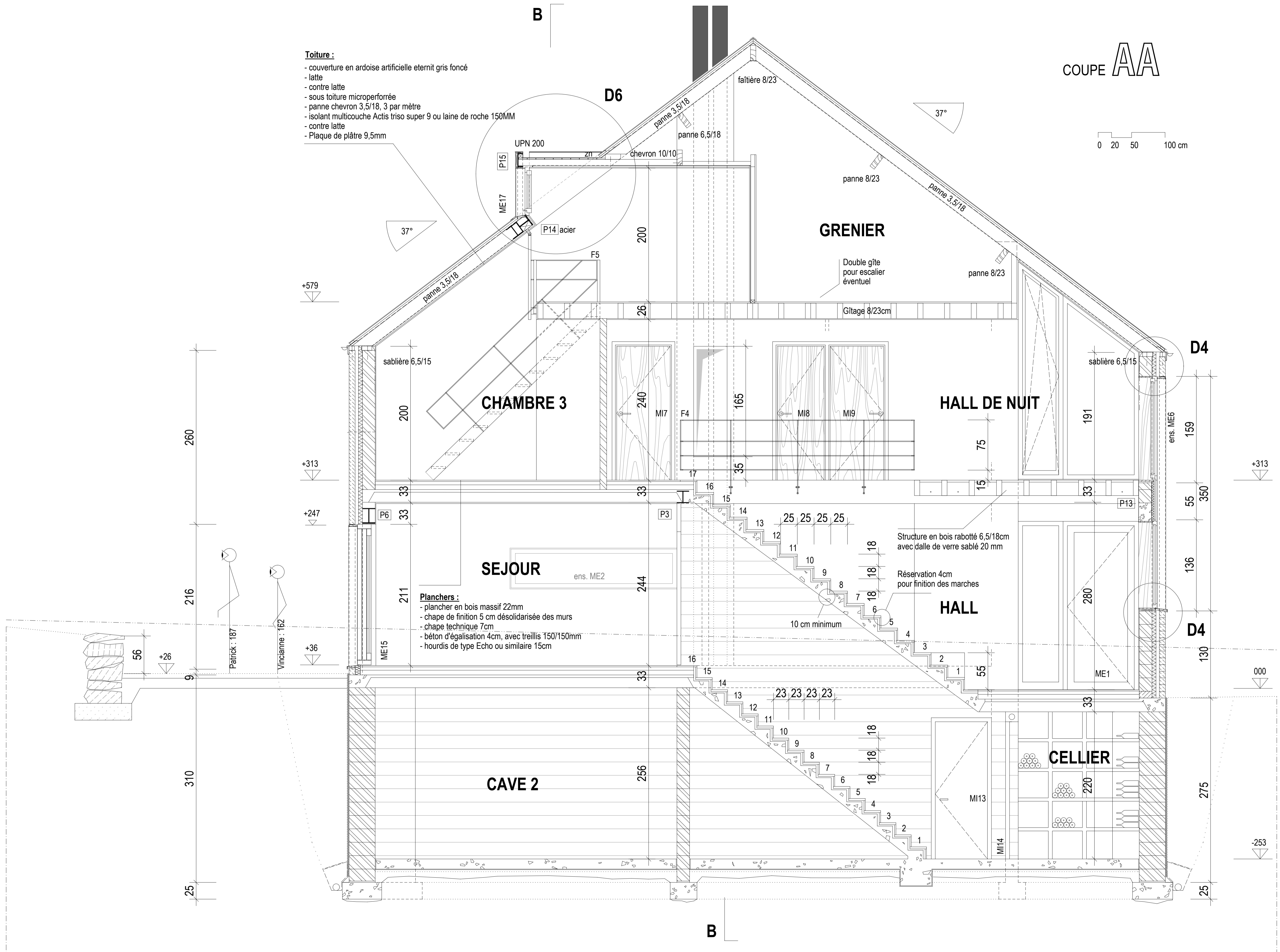
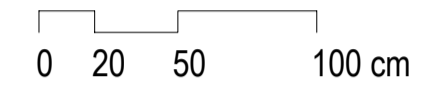


B

Toiture :

- couverture en ardoise artificielle eternit gris foncé
- latte
- contre latte
- sous toiture microperforée
- panne chevron 3,5/18, 3 par mètre
- isolant multicouche Actis triso super 9 ou laine de roche 150MM
- contre latte
- Plaque de plâtre 9,5mm

COUPE AA



- Planchers :**
- plancher en bois massif 22mm
 - chape de finition 5 cm désolidarisée des murs
 - chape technique 7cm
 - béton d'égalisation 4cm, avec treillis 150/150mm
 - hourdis de type Echo ou similaire 15cm

Structure en bois raboté 6,5/18cm avec dalle de verre sablé 20 mm

Réservation 4cm pour finition des marches

10 cm minimum

B

B